

Screw jacks

Contents

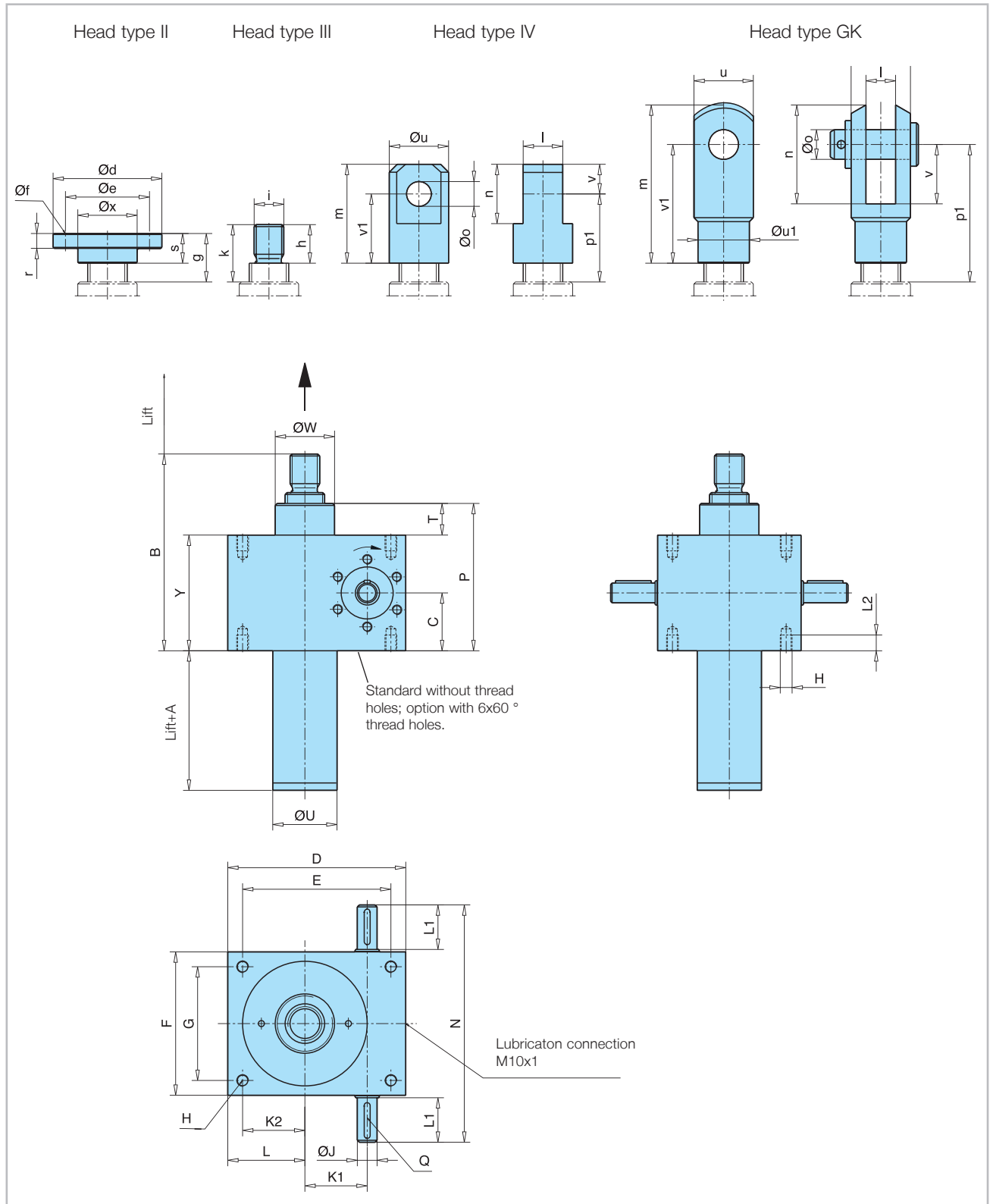
3.6	MERKUR range dimension plans	81-88
3.6.1	Type 1	82-85
3.6.1.1	Standard	82-83
3.6.1.2	2 nd Guide ring 2FR	84
3.6.1.3	With added-on limit switches Sm/Si	84
3.6.1.4	Anti-turn device V	84
3.6.1.5	Anti-turn device Vm/Vi with added-on limit switches	84
3.6.1.6	Mounting brackets	85
3.6.2	Type 2	86-88
3.6.2.1	Standard	86-87
3.6.2.2	With short safety nut LFM-K	88
3.6.2.3	With long safety nut LFM-E (BGV C1 or VBG 14)	88



3.6 MERKUR range dimension plans

3.6.1 Type 1

3.6.1.1 Standard



Screw jacks

Size	M 0	M 1	M 2	M 3	M 4	M 5	M 6	M 7	M 8
Screw	Tr 14x4	Tr 18x4	Tr 20x4	Tr 30x6	Tr 40x7	Tr60x9	Tr80x10	Tr100x10	Tr120x14
Ball screw**	-	Ku 16x05 Ku 16x10 Ku 16x20	Ku 20x05	Ku 25x05 Ku 25x10 Ku 25x25	Ku 40x05 Ku 40x10 Ku 40x20	Ku 50x10	-	-	-
A/A*	25/55	25/55	35/65	40/75	45/100	55/90	60/110	65/155	100/145
B	77	97	120	132	182	255	275	360	466
C	25	31	37,5	41	58,5	80	82,5	110	133
D	60	80	100	130	180	200	240	290	360
E	48	60	78	106	150	166	190	230	290
F	50	72	85	105	145	165	220	250	300
G	38	52	63	81	115	131	170	190	230
H	M6	M8	M8	M10	M12	M20	M30	M36	M42
ø J k6	9	10	14	16	20	25	30	35	48
K 1	20	25	32	45	63	71	80	100	135
K 2	16	21	29	42	63	66	75	95	115
L	22	31	40	54	78	83	100	125	150
L 1	20	22,5	25,5	43	45	65	65	63	97,5
L 2	12	13	15	15	16	30	45	54	80
N	92	120	140	195	240	300	355	380	500
P	62	74	93	105	149	200	205	270	326
Q	3x3x14	3x3x18	5x5x20	5x5x36	6x6x36	8x7x56	8x7x56	10x8x56	14x9x90
T	12	12	18	23	32	40	40	50	60
ø U	28	32	40	50	65	90	125	150	180
ø W	26	30	38,7	46	60	85	120	145	170
Y	50	62	75	82	117	160	165	220	266
Head II									
ø d	50	65	80	90	110	150	220	260	310
ø e	40	48	60	67	85	117	170	205	240
ø f	4xØ7	4xØ9	4xØ11	4xØ11	4xØ13	4xØ17	4xØ25	4xØ32	4xØ38
g	19	24	28	28	34	57	72	92	142
s	16	20	21	23	30	50	60	80	120
r	6	7	8	10	15	20	30	40	40
ø x	26	30	40	46	60	85	120	145	170
Head III									
h	12	19	20	22	29	48	58	78	118
i	M8	M12	M14	M20	M30	M36	M64x3	M72x3	M100x3
k	15	23	27	27	33	55	70	90	140
Head IV									
l h10	12	15	20	30	35	40	80	110	120
m	40	55	63	78	105	147	175	220	330
n	20	30	36	45	65	83	130	170	230
ø o H8	10	14	16	24	32	40	60	80	90
p1	33	44	52	58	74	104	117	147	222
ø u	25	30	40	45	60	85	120	160	170
v	10	15	18	25	35	50	70	85	130
v1	30	40	45	53	70	97	105	135	200
Head GK									
l H13	8	12	14	20	30	36	-	-	-
m	42	62	72	105	160	188	-	-	-
n	26	37	44	65	100	116	-	-	-
ø o H9	8	12	14	20	30	35	-	-	-
p1	35	52	63	85	124	151	-	-	-
u	16	24	27	40	60	70	-	-	-
ø u1	14	20	24	34	52	60	-	-	-
v	16	24	28	40	60	72	-	-	-
v1	32	48	56	80	120	144	-	-	-

A* = Screw with run-out prevention system or screw for KGT-Version ** Dimensions for ball screws on request.

Screw jacks

3.6 MERKUR range dimension plans

3.6.1.2 2nd Guide ring 2FR

With all sizes of the MERKUR standard range

3.6.1.3 With added-on limit switches Sm/Si

All sizes can be supplied with mechanical Sm or inductive Si limit switches.

Size	A4	B	B1	C Sm/Si	D Sm/Si	T	M	Ø W2	X
M 0	105	84	95	44/38	12/24	50	M12x1	28	±10
M 1	105	86	97	44/38	12/24	50	M12x1	32	±10
M 2	110	90	100	44/38	16/28	50	M12x1	40	±10
M 3	115	94	104	49/43	16/28	50	M12x1	50	±10
M 4	135	101	111	58/52	20/32	50	M12x1	65	±10
M 5	140	114	123	66/60	20/32	50	M12x1	90	±10
M 6	135	on request		66/60	25/37	50	M12x1	125	±10
M 7	170	on request		76/70	30/42	50	M12x1	150	±10
M 8	160	on request		86/80	30/42	50	M12x1	180	±10

3.6.1.4 Anti-turn device V

The screw must be prevented from twisting in order to ensure correct linear movement. This measure can be provided on site or by means of an anti-turn device fitted to the MERKUR unit using a square tube.

Size	A3	W4
M 1	60	35x35
M 2	70	40x40
M 3	80	50x50
M 4	100	70x70
M 5	115	90x90
M 6	120	125x125
M 7	125	150x150
M 8	155	180x180

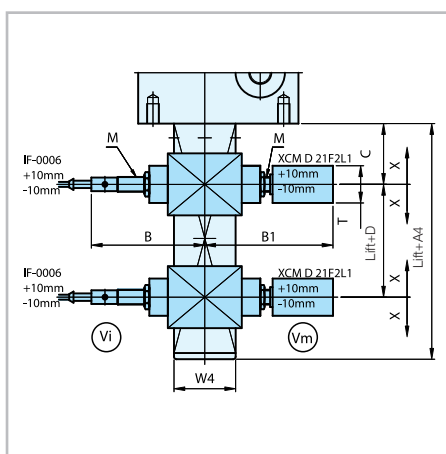
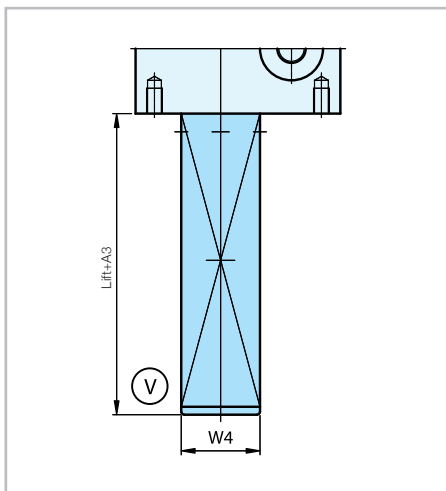
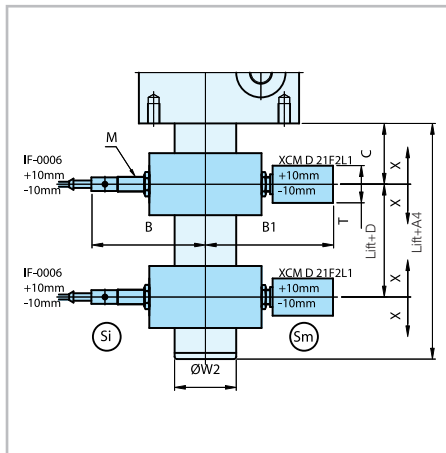
3.6.1.5 Anti-turn device Vm/Vi with added-on stroke limit switches

All sizes can be supplied with mechanical Vm or inductive Vi limit switches.

Size	A4	B	B1	C Vm/Vi	D Vm/Vi	T	M	W4	X
M 1	105	86	96	44/38	12/24	50	M12x1	35x35	±10
M 2	110	88	100	44/38	16/28	50	M12x1	40x40	±10
M 3	115	93	105	49/43	16/28	50	M12x1	50x50	±10
M 4	135	101	110	58/52	20/32	50	M12x1	70x70	±10
M 5	145	113	125	66/60	20/32	50	M12x1	90x90	±10
M 6	135	on request		66/60	25/37	50	M12x1	125x125	±10
M 7	170	on request		76/70	30/42	50	M12x1	150x150	±10
M 8	160	on request		86/80	30/42	50	M12x1	180x180	±10



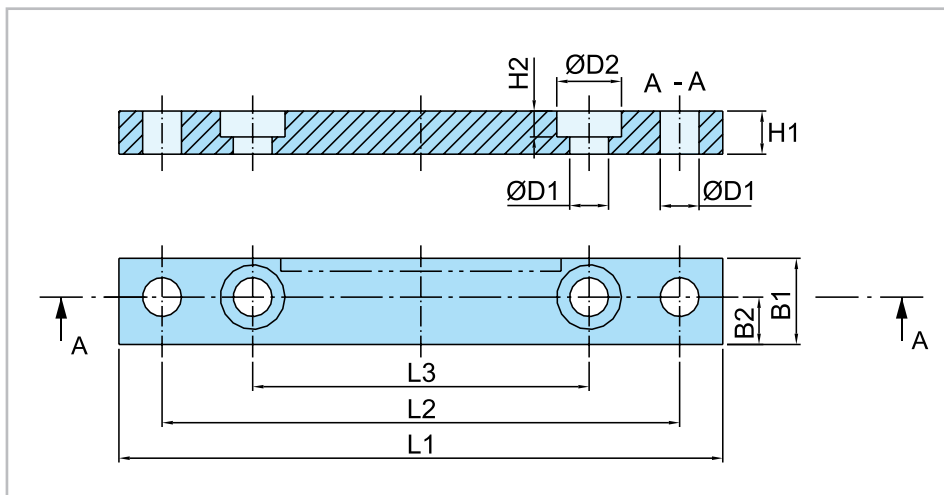
3



Screw jacks

3.6 MERKUR range dimension plans

3.6.1.6 Mounting brackets



3

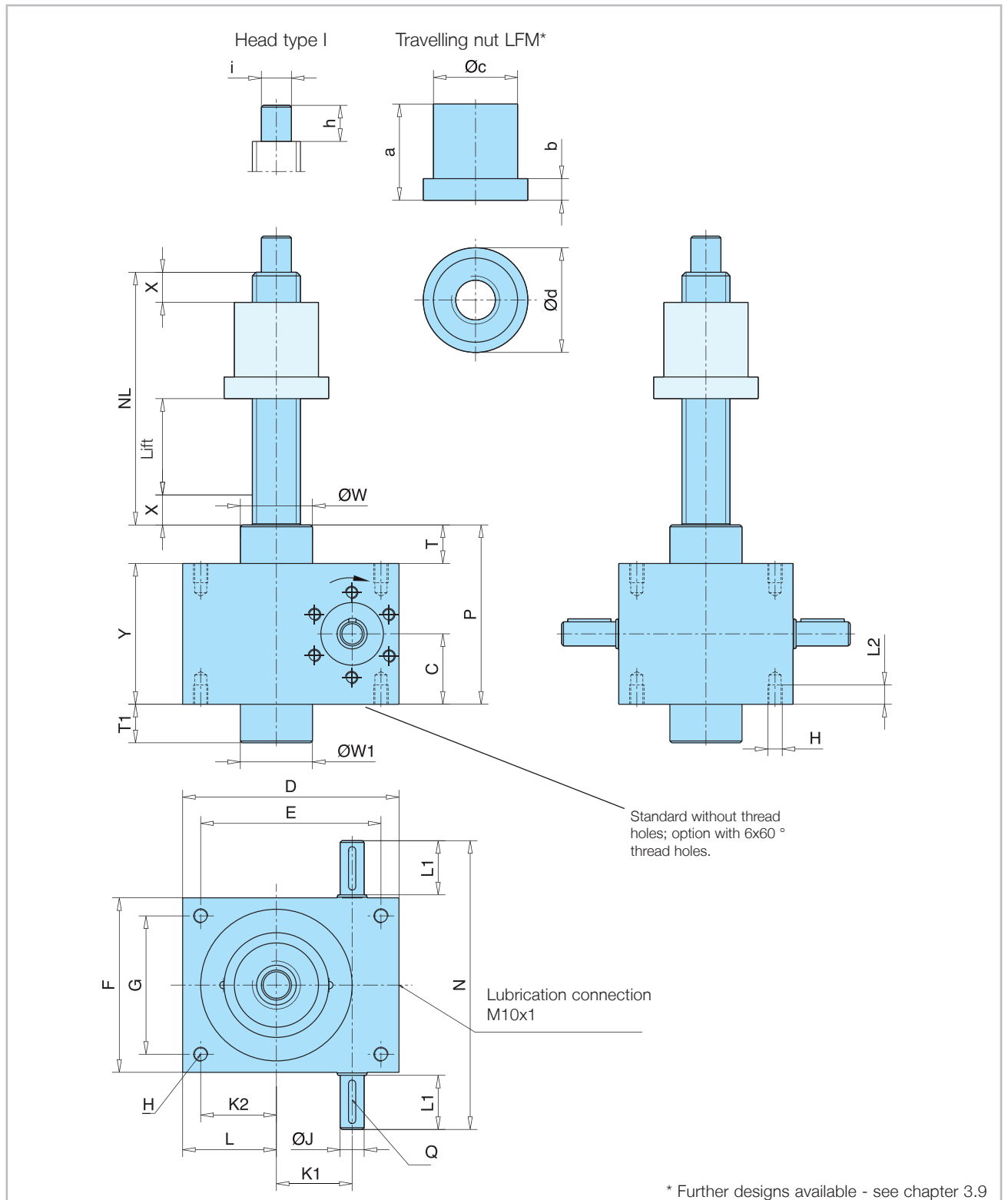
Size	L1	L2	L3	B1	B2	H1	H2	ØD1	ØD2
M 0	90	75	48	12	6	10	5	6,6	11
M 1	120	100	60	20	10	10	5	9,0	15
M 2	140	120	78	20	11	10	6	9,0	15
M 3	170	150	106	25	12	12	7	11,0	18
M 4	230	204	150	30	15	16	8	13,5	20
M 5	270	236	166	40	17	25	14	22,0	33
M 6	on request								
M 7									
M 8									

3.6 MERKUR range dimension plans

3.6.2 Type 2

3.6.2.1 Standard

3



Screw jacks

3.6 MERKUR range dimension plans

Size	M 0	M 1	M 2	M 3	M 4	M 5	M 6	M 7	M 8
Screw	Tr 14x4	Tr 18x4	Tr 20x4	Tr 30x6	Tr 40x7	Tr60x9	Tr80x10	Tr100x10	Tr120x14
C	25	31	37,5	41	58,5	80	82,5	110	133
D	60	80	100	130	180	200	240	290	360
E	48	60	78	106	150	166	190	230	290
F	50	72	85	105	145	165	220	250	300
G	38	52	63	81	115	131	170	190	230
H	M 6	M 8	M 8	M 10	M 12	M 20	M 30	M 36	M 42
ø J k6	9	10	14	16	20	25	30	35	48
K 1	20	25	32	45	63	71	80	100	135
K 2	16	21	29	42	63	66	75	95	115
L	22	31	40	54	78	83	100	125	150
L 1	20	22,5	25,5	43	45	65	65	63	97,5
L 2	12	13	15	15	16	30	40	54	80
N	92	120	140	195	240	300	355	380	500
NL	lift + 52	lift + 56	lift + 70	lift + 85	lift + 110	lift + 125	lift + 170	lift + 195	lift + 215
P	62	74	93	105	149	200	205	270	326
Q	3x3x14	3x3x18	5x5x20	5x5x36	6x6x36	8x7x56	8x7x56	10x8x56	14x9x90
T	12	12	18	23	32	40	40	50	60
T1 ¹⁾	12	12	18	23	32	40	40	50	60
ø W	26	30	36,1	46	60	85	120	145	170
ø W1 ¹⁾	26	30	38,7	46	60	85	120	145	170
Safety X	10	12	15	20	25	25	25	25	30
Y	50	62	75	82	117	160	165	220	266
Travelling nut LFM									
a	32	32	40	45	60	75	120	145	155
b	10	10	12	15	18	25	35	35	50
ø c h9	40	40	45	50	70	90	130	150	160
ø d	50	50	65	80	87	110	155	190	225
Head I									
ø i j6	8	12	15	20	25	40	60	80	95
h	12	15	20	25	30	45	75	100	120

¹⁾ For size M0 up to size M5 can the bearing neck be omitted.

Screw jacks

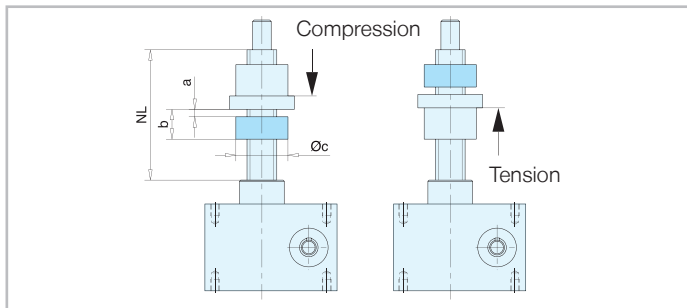
3.6 MERKUR range dimension plans

3.6.2.2 With short safety nut LFM-K



The short safety nut takes up the axial strain if the main nut breaks. This considerably increases the operating safety of the drive elements. The safety nut can also be used to precisely check for wear on the main nut, as the clearance between the two nuts changes according to the amount of wear. In the case of worm gear screw jacks with short safety nut, the direction of main stress (tensile and compression force) and the mounting position should be taken into account, as only a correctly fitted safety nut is capable of taking up the load.

MERKUR type 2, compression and tensile force

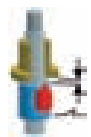


Size	NL	a ¹⁾	b	Øc*
M 0				
M 1	on request			
M 2	lift+95	5	25	45
M 3	lift+120	5	35	50
M 4	lift+150	5	40	70
M 5	lift+185	5	60	90
M 6	lift+250	10	80	130
M 7	lift+275	10	80	150
M 8	on request			

* Diameter Øc for standard supplied travelling nut FMR.

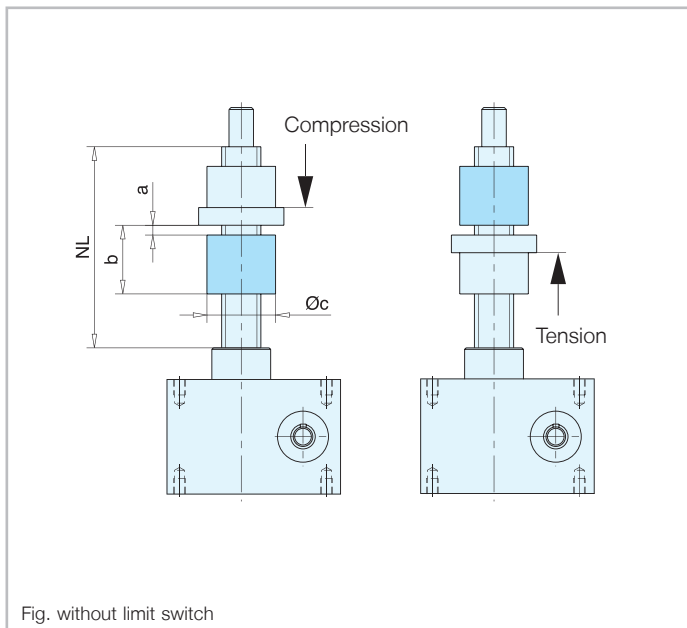
3

3.6.2.3 With long safety nut LFM-E (BGV C1 or VBG 14)



Worm gear screw jacks used on theatre stages (BGV C1, former VBG 70), lifting platforms (VBG 14) or lifting systems that might affect personal safety are designed according to current regulations, and include such items as anti-drop systems (self-locking screws and/or mechanical safety brakes as part of the drive system). The function of the synchronizing device is guaranteed, if required, by additional components.

MERKUR type 2, compression and tensile force



Size	NL	a ¹⁾	b	Øc*
M 0				
M 1	on request			
M 2	lift+115	5	45	45
M 3	lift+140	5	55	50
M 4	lift+180	5	70	70
M 5	lift+210	5	85	90
M 6	lift+305	10	135	130
M 7	lift+355	10	160	150
M 8	on request			

¹⁾ As new.

* Diameter Øc for standard supplied travelling nut FMR.

See chapter 3.9 for details of further travelling nut configurations

- Travelling nut with trunnion LWZ
- Travelling nut EFM
- Travelling nut with keyed surface LSF
- Travelling nut with spherical support LSA
- Ball screw (Ku) with single flange nut KGM